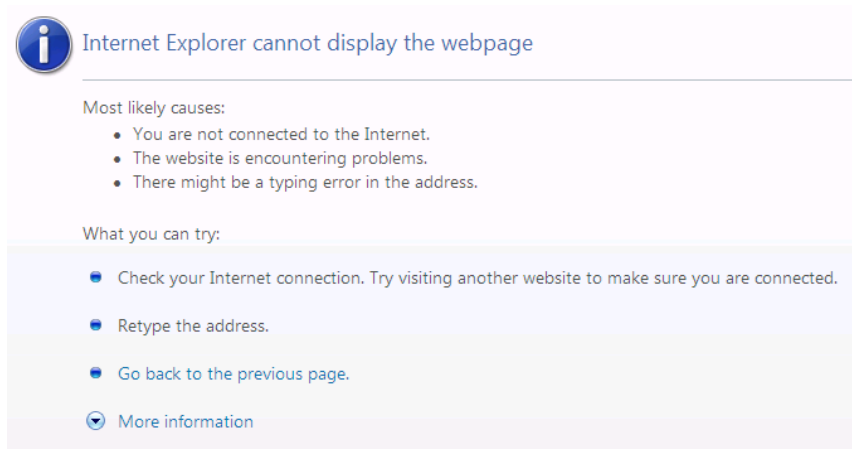


## *How do I set up Wireless as a Student?*

---

When you first try to open an internet browser window you may receive an error message like the one below.



**i** Internet Explorer cannot display the webpage

Most likely causes:

- You are not connected to the Internet.
- The website is encountering problems.
- There might be a typing error in the address.

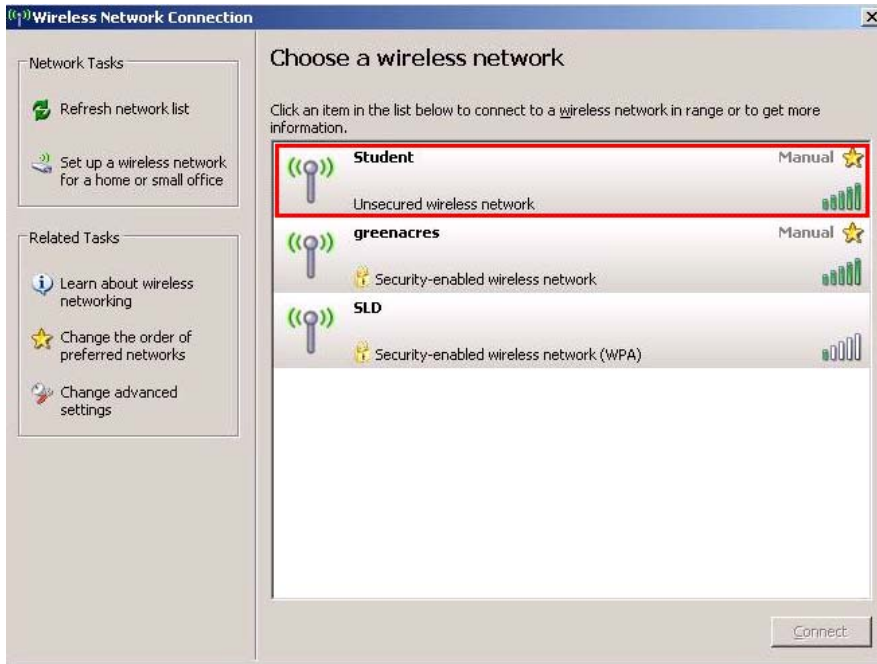
What you can try:

- Check your Internet connection. Try visiting another website to make sure you are connected.
- Retype the address.
- Go back to the previous page.
- More information

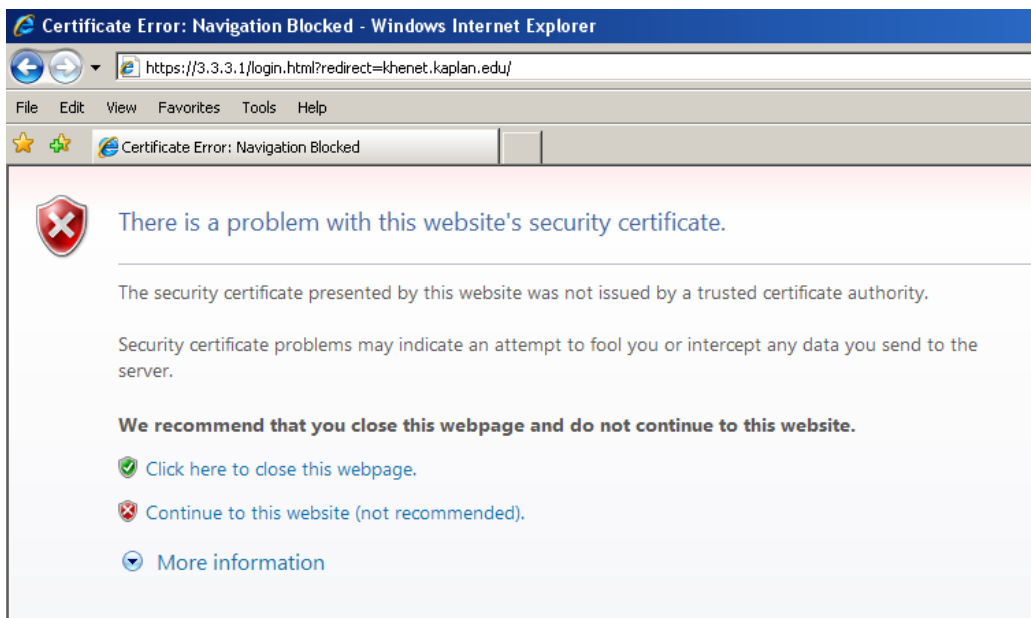
In order to use the Student Wireless Network at Kaplan you will need to complete the set up instructions below.



Choose the "Student" Network



Open an Internet Explorer web browser. If you are using Internet Explorer 7 on Windows XP or Vista you will receive the following error message.



Click on the second option down, Continue to this website (not recommended.)

Upon opening, you will be presented with a logon prompt.



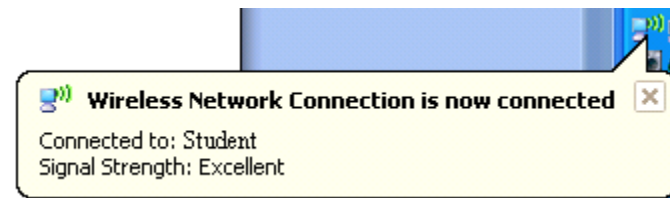
Enter the username: **student**

Enter the password: **KaplanStudent**

**Make sure you use a capital K and a capital S on the password.**

A browser window will connect you to the internet.

A separate window will open displaying that you are logged on.



## Troubleshooting

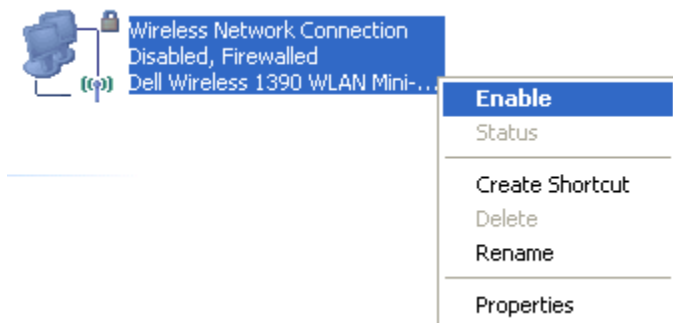
Make sure the wireless radio on your computer is turned on

Make sure the wireless card on your computer is turned on

Open windows control panel and click on **Network Connections**



Right-click on **Wireless Network Connection**, click **Enable**



***Do not close the additional window that displays your login status. If the window is closed, you the user will be disconnected within three (3) minutes.***